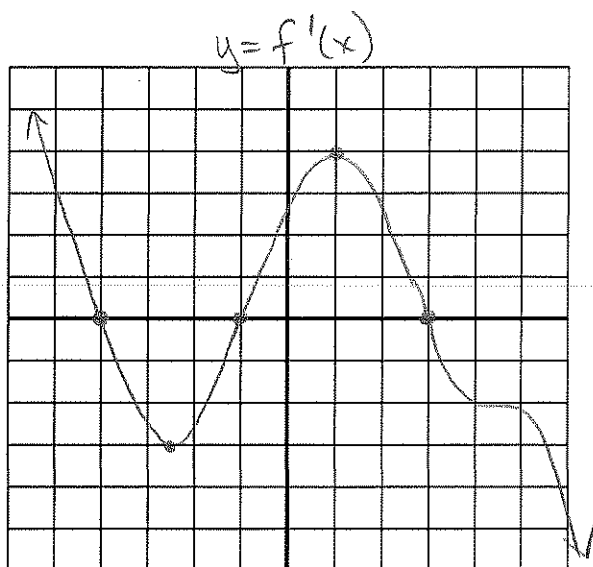
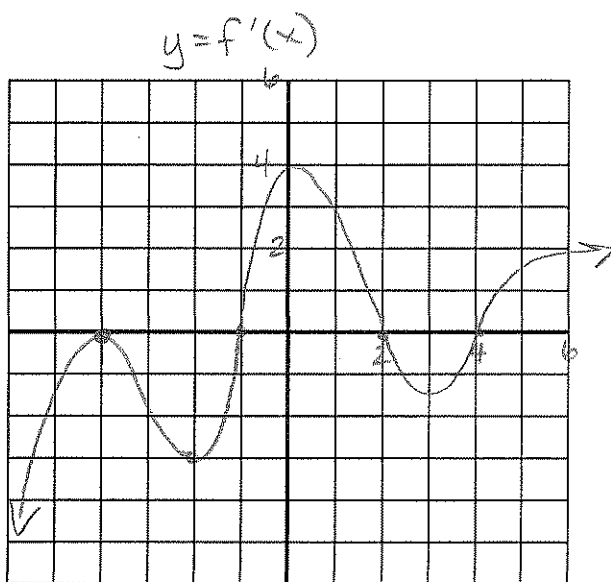


Determining $f(x)$ from $f'(x)$: Graphically

Given the graph of $f'(x)$, describe where $f(x)$ is increasing, decreasing, and the x -values of all local extrema (classify them). Include reasons with your answers.



$f(x) \uparrow$ _____
 $f(x) \downarrow$ _____
 $x_{val. min}$ _____
 $x_{val. max}$ _____



$f(x) \uparrow$ _____
 $f(x) \downarrow$ _____
 $x_{val. min}$ _____
 $x_{val. max}$ _____